

# OPERATION INSTRUCTIONS



# CAR Entertainment System



#### Notes on Installation

The unit is designed for 12V-14VDC, negative ground operation system only. Before installing the unit, make sure your vehicle is connected to 12V-14V DC negative grounded electrical system.

The negative battery terminal must be disconnected before making connections, which can reduce damage to the unit due to short circuit.




Be sure to connect the color coded leads correctly according to the diagram. Incorrect connections may cause the malfunction of the unit or damage the vehicle's electrical system.

Be sure to connect the speaker (-) leads to the speaker (-) terminal. Never connect the left and right channel speaker cables each other or to the vehicle body. Do not block vents or radiator panels. Blocking them will cause heat to build up inside and may result in fire.

After the completion of the installation and begin to operate the unit (including replacing the battery), please press the reset button (1) on the front panel with pointed objects (such as ball pen) to set the unit to initial status.

\* This feature is optional, please refer to unit. Under compressed motion pictures (MPEG4), file names under extension AVI can be played back.

## This Unit Can Play The Following Disc Only

Type of Disc	Label on the Disc	Recorded Material	Size of Disc
<b>DVD</b>		Video and Audio	12cm
<b>VCD</b>		Video and Audio	12cm
<b>MP3</b>	<b>MP3</b>	Audio	12cm
<b>CD</b>		Audio	12cm

Notes (1) the unit is compatible with MPEG4, DVD, VCD1.0/2.0/3.0, DVCD, CD-RW, CD-R, PICTURE-CD version disc.

(2) the manual conforms to DVD, VCD, MP3, WMA AND CD. While enjoying DVD, VCD, MP3, WMA and CD, the display will automatically identify the discs and indicate the corresponding words.

- ❗ DO NOT ATTEMPT TO MODIFY THE UNIT, MODIFYING THE UNIT MAY CAUSE AN ACCIDENT.
- ❗ STOP THE VEHICLE BEFORE CARRYING OUT ANY OPERATION THAT COULD INTERFERE WITH YOUR DRIVING.
- ❗ DO NOT TURN ON THE UNIT IF THE TEMPERATURE INSIDE THE VEHICLE IS OUT OF -20C TO 60C.
- ❗ THIS PRODUCT IS DESIGNED FOR TWO SINGLE VIDEO OUTPUT, PLEASE USE A SPLITTER IF YOU WOULD LIKE TO CONNECT FOR MORE VIDEO OUTPUT.
- ❗ TO ENJOY OPTIMUM SOUND AND VISION WHILE PLAYING, HANDLE THE DISC AS FOLLOW:

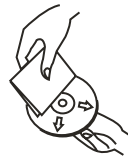


Handle the disc by its edge to keep the disc clean, and do not touch the surface.

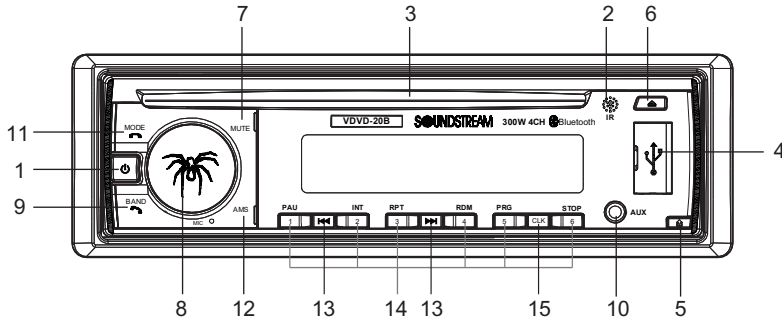
Do not use your CDs with paste residue or ink attached.

Do not use CDs with labels or stickers attached, which may leave a sticky residue while beginning to peel off.

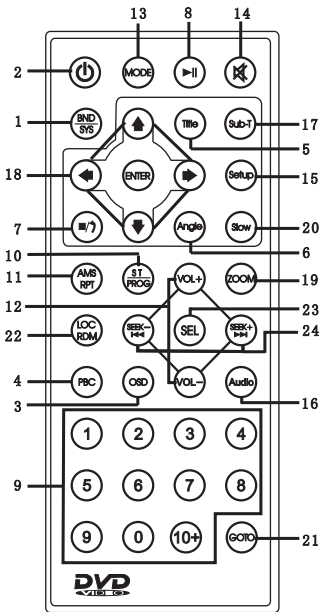
Clean the discs with an optional cleaning cloth. Wipe each disc from center out.



\* This feature is optional, please refer to unit. Under compressed motion pictures (DIVX/MPEG4), file names under extension AVI can be played back.



- 1 ■ **POWER** Turn on the power; Turn off the power [Hold].
- 2 ■ **IR Remote sensor.**
- 3 ■ **Insert disc**
- 4 ■ **USB socket**
- 5 ■ **Front panel release button**
- 6 ■ **▲** Open and close the monitor panel. (When the monitor panel is open, you can insert a disc and an SD card).
- 7 ■ **MUTE** press the button to close the volume output and press again to **renew**the volume
- 8 ■ **VOL-/VOL+** Adjust the volume.  
SEL: Press this button to choose the mode of setup choice of the audio characteristic you need.
- 9 ■ **Radio Mode/answer a call**
- 10 ■ **AUX-IN PORT**
- 11 ■ **Mode with Hang-Up**
- 12 ■ **(AMS)**press this button to browse the station under the radio status and **re play** under the play back status.
- 13 ■ **(◀▶)** (channel or song selection) pressing this button can search tune and select music
- 14 ■ **(1-6)** (figure) pressing this button can directly select music what you want and select the preinstalled broadcast station.
- 15 ■ **CLK**(display time). Press this key can show the current time or adjust .



## Basic operations—Remote control

Installing the lithium coin battery (Cr2025)

### Before using the remote control:

- Aim the remote control directly at the remote sensor on the unit.
- DO NOT expose the remote sensor to bright light (direct sunlight or artificial lighting).

### Warning: To prevent accidents and damage

- Do not install any battery other than CR2025 or its equivalent
- Store the battery in a place where children cannot reach.
- Do not recharge, short, disassemble, or heat the battery or dispose of it in a fire.
- Do not poke the battery with tweezers or similar tools.
- Wrap the battery with tape and insulate when throwing away or saving it.

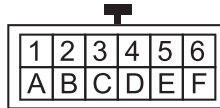
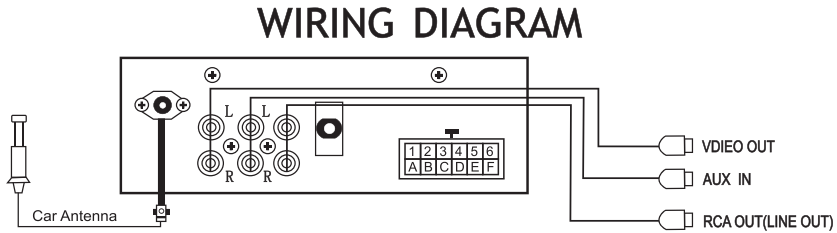
- |               |  |
|---------------|--|
| 1. BAND/SYS   | 13. MODE   |
| 2. POWER      | 14. MUTE   |
| 3. OSD        | 15. SETUP  |
| 4. PBC        | 16. AUDIO  |
| 5. TITLE      | 17. SUBTITLE   |
| 6. ANGLE      | 18. UP/DOWN/LEFT/RIGHT/ENTER                         |
| 7. Stop       | 19. ZOOM   |
| 8. Play/Pause | 20. SLOW   |
| 9. (1~10+)    | 21. GOTO   |
| 10. ST/PROG   | 22. LOC/RDM  |
| 11. AMS/RPT   | 23. SEL  |
| 12. VOL-/VOL+ | 24. Last track/Next track /Fast forward/Back forward |

## BASIC USAGE

1. under radio condition, press this button to choose wave brand and under VCD.DVD condition press this button to choose AUTO PAL or NTSC system.
2. POWER press POWER button, the machine will be power-off ; Press again, the machine will be power-on
3. OSD Press the OSD button, the relative information of the disc will be displayed on the monitor  
Type of Disc, title, chapter, play time, remaining time, played time remaining time of the disk
4. PBC When playing DVD disc, press MENU once to return to sub-menu. Press MENU again to return to the main menu. (for some remote control without PBC button, it works as PBC when playing VCD)
5. TITLE When playing DVD disc, press TITLE to return to main title page.
6. ANGLE When playing the disc with multi-angle, it's convenient to change the view angle.
7. S When playing DVD, VCD, CD disc, press STOP once, the unit will memorize the previous ending point. Press PLAY button to go on playing. Press STOP for the second time to stop the play and end the memory.
8. K When playing the disc, press PLAY/PAUSE once to pause, press PLAY/PAUSE again then return to normal play.; Press this button to AUTO-browse picture under the condition of playing picture.
9. (0-10+) When playing VCD, CD disc, after loading the disc, use the digit key to select the desired track or chapter directly. Press 10+ key and then another digit key to select the track which number is 10 or more than 10.  
You can press the digit keys at PROGRAM and MENU selection.
10. press this button to choose the stereo or monophonic station under the radio mode, you can edit the content you like in the programming mode under the DVD/CD playing status.
11. press this button to browse the station under the radio status and repeat play under the play back status.
12. VOL-/VOL+ Press VOLUME + to adjust volume up, Press VOLUME - to adjust volume down.
13. Press the button to choose the source you need in turn of TUNER → DISC(DVD/VCD/CD) → AUX → TV → GPS → SD = CD-CH.
14. MUTE Press MUTE button, no sound will give out and the mute symbol will display on the monitor. Press MUTE again, MUTE OFF will display and the sound will be resumed.

15. Press this button to switch among different setting items.
16. **AUDIO** When playing DVD with more than one audio stream, press **AUDIO** to select you desired. . ,
17. **SUBTITLE** When playing the disc with multi-subtitle, press **SUBTITLE** continually, the subtitle changes in a circle, you can select one.
18. **UP DOWN LEFT RIGHT AND ENTER KEY**. This button can move the cursor from up down left and right position to choose the item of the system setup menu. You can press left and right key to switch the music.picture and film of the SD card and USB when playing.
19. **ZOOM** When playing DVD, VCD disc, Picture press **ZOOM** to zoom in or zoom out the picture.  
In zoom in mode, press up/down/left/right to move the picture for viewing. The picture can not be moved in zoom out mode.
20. Press this button to turn slowly into 1 / 2 times, 1 / 3 times, 1 / 4 times, 1/5 times, 1/6times and 1/7 times.
21. **GOTO** Press **GOTO** button to select title time, chapter time, track time to play. You can use the digit keys input the goto time. And then press **ENTER** to start the playing
22. Press this button to switch between long-distance and short-distance under the radio status and random play under the VCD and DVD playing status
23. Press this button to choose the mode of setup options of the audio characteristic
24. **◀◀/▶▶** When playing DVD disc, press **PREV/NEXT** to the previous chapter.  
When playing VCD, CD disc, press **PREV/NEXT** to the previous track.

## WIRING DIAGRAM

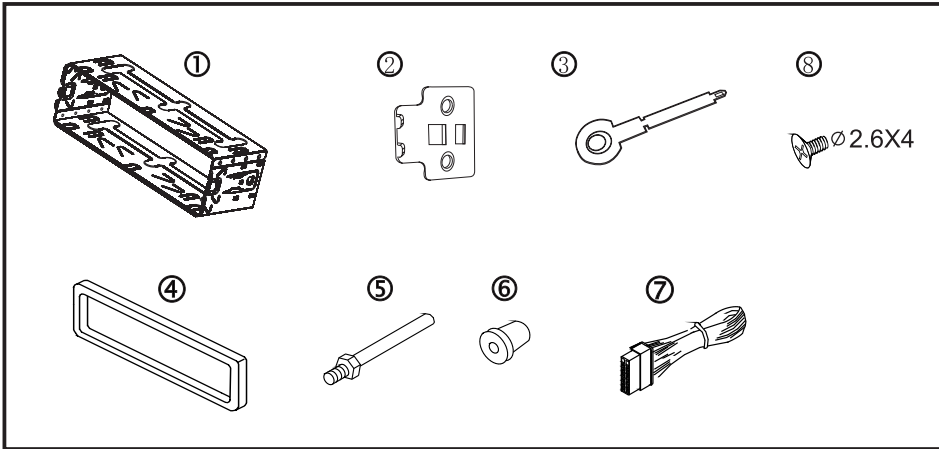


1	Violet/Right Rear Speaker+
2	Grey/Right Front Speaker+
3	White/Left Front Speaker+
4	Green/Left Rear Speaker+
5	Blue/Connect to power Antenna or Remote for Amplifier blue power antenna.
6	Yellow/Fuse 10 A, connect to battery 12Volts of power source that is always live.

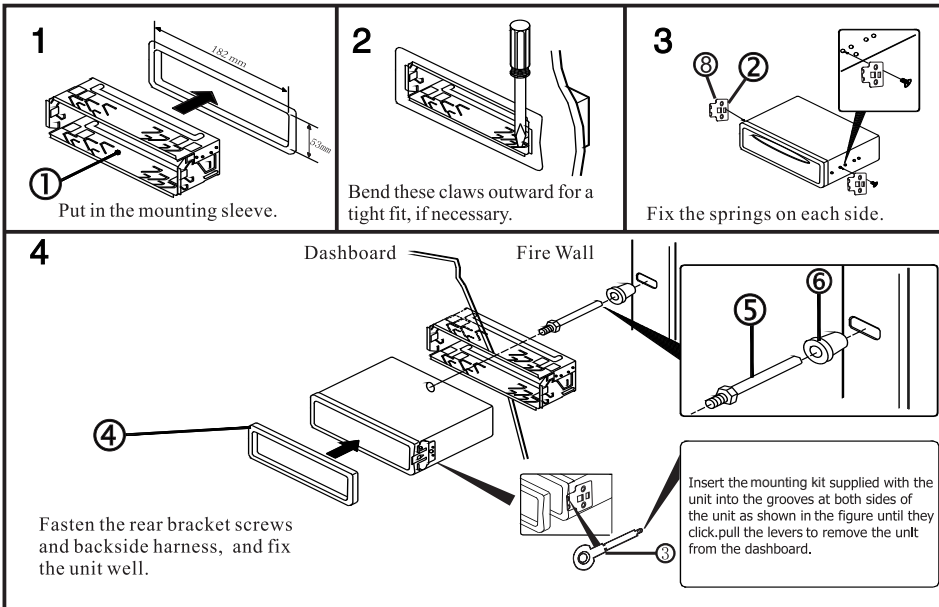
A	Violet&Black/Right Rear Speaker-
B	Grey&Black/Right Front Speaker-
C	White&Black/Left Front Speaker-
D	Green&Black/Left Rear Speaker-
E	Red/ 1A, +12V, Connect to ignition key switch
F	Black/Connect Ground



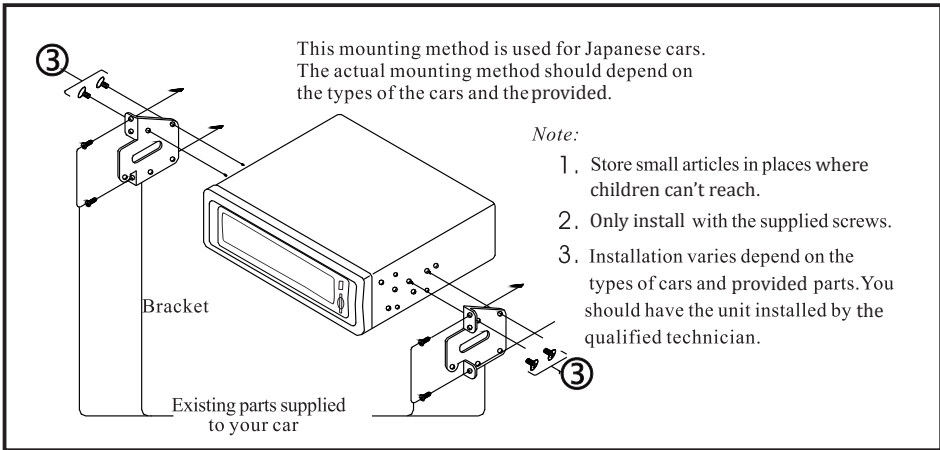
## Parts List (The numbers in the list are used for installation.)



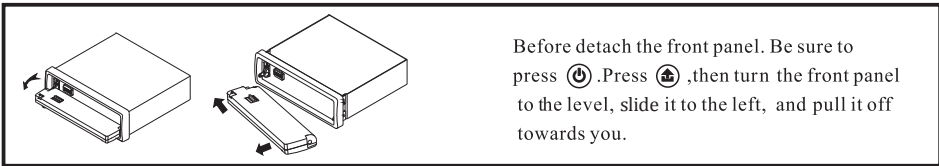
## Mounting Example ①



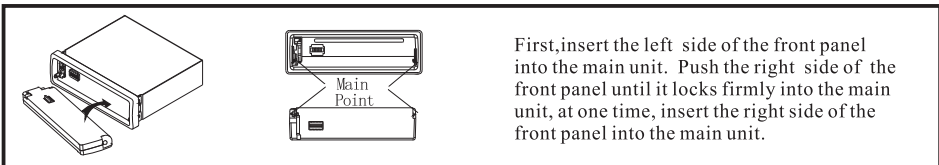
## Mounting Example ②



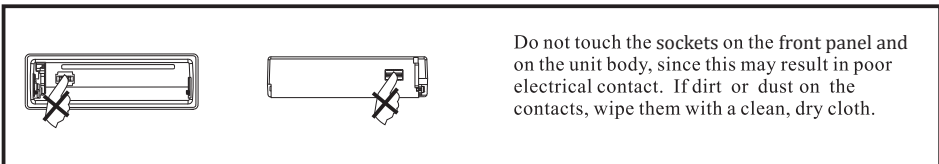
## DETACH THE FRONT PANEL



## REPLAC THE FRONT PANEL



## PRECAUTIONS



## SPECIFICATION

### General

Power Requirements :	14.4VDC
Load Impedance :	4 $\Omega$
Max. Power Output :	45W X 4(Ch)
Tone Control :	8dB (Bass 100 Hz, Treble 10 KHz)
Dimension :	Approx. 192 x 178 x 50mm (D x W x H)
Mounting Dimension :	Approx. 169 x 182 x 53mm (D x W x H)
Weight :	Approx. 1.75 KG

### DVD Deck Section

Disc Played :	DVD, MPEG4*, DIVX*, VCD (1.0, 2.0), MP3, WMA, CD, CD-R/RW, Picture-CD.
Video System :	Auto / PAL / NTSC
Mounting Angle :	0 ~ 30

### Video Section

Video System :	4:3 Letter Box, 4:3 Pan Scan
Video Output Level :	1.0V P-P 75 ohms
Horizontal Resolution :	500

### Audio Section

Maximum Output Level :	600 $\Omega$ (2      2.0 Vrms)
Frequency Response :	20Hz ~ 20 KHz
Signal-to-Noise Ratio :	85 dB
Separation :	80 dB

### FM Tuner Section

Tuning Range :	87.5 ~ 108 MHz (Europe)	87.5 ~ 107.9 Mhz (USA)	65 ~ 108 Mhz (OIRT)
IF Range :	10.7 MHz		
Usable Sensitivity (-30 dB) :	15 dB		
Signal-to-Noise Ratio :	60 dB		
Stereo Separation :	30 dB (1 KHz)		
Frequency Response :	30 ~ 15000 Hz		


### AM Tuner Section

Frequency Range :	522 ~ 1620 KHz (Europe / OIRT)	530 ~ 1710 KHz (USA)
IF Range :	450 KHz	
Usable Sensitivity (-20 dB) :	25 dB	

NOTE: Due to continuous product improvement, specifications and design will change without notice.

\* This feature is optional, please refer to unit. Under compressed motion pictures (DIVX/MPEG4), file names under extension AVI can be played back.

## SIMPLE TROUBLE SHOOTING GUIDE

Problem	Cause / Solution
No Power	Check and make sure whether the fuse is burned out replace with the proper fuse if necessary.
Some errors occur in the LCD or no function when pressing the button.	Press the RESET button.
Unable to receive stations	Check and make sure if the antenna is inserted or the antenna is properly connected. If so, insert the antenna or connect it properly.
Poor effect on receiving a station.	Antenna may not be the proper length. Make sure the antenna is fully extended without damage . If broken, replace the antenna with a new one. The broadcasting signal is too weak. The antenna is poorly grounded, check and make sure the antenna is properly grounded at
A disc cannot be loaded.	A disc is already loaded in the mechanism.
The stereo indicator "  " is flashing.	Tune in the frequency accurately.  The broadcasting signal is too weak.
No picture	The Video line from main unit to the TV is not connected properly.
The picture noise appears.	Improper setting of the color system. Set the color system to "PAL" or "NTSC", according to the connected television.  The disc is dirty or damaged.

## SIMPLE TROUBLE SHOOTING GUDIE

Problem	Cause / Solution
Unable to use Bluetooth	Check if the bluetooth mobile is correctly connected with this machine.refer to mobiles instrudion and match/connect again
Too much Echo	while communication Voice is too loud,adjust voice down
Listen to mobile music or communication, voice intermittently	Bluetooth is too far away this unit,put the mobile near the machine within 5 meters.